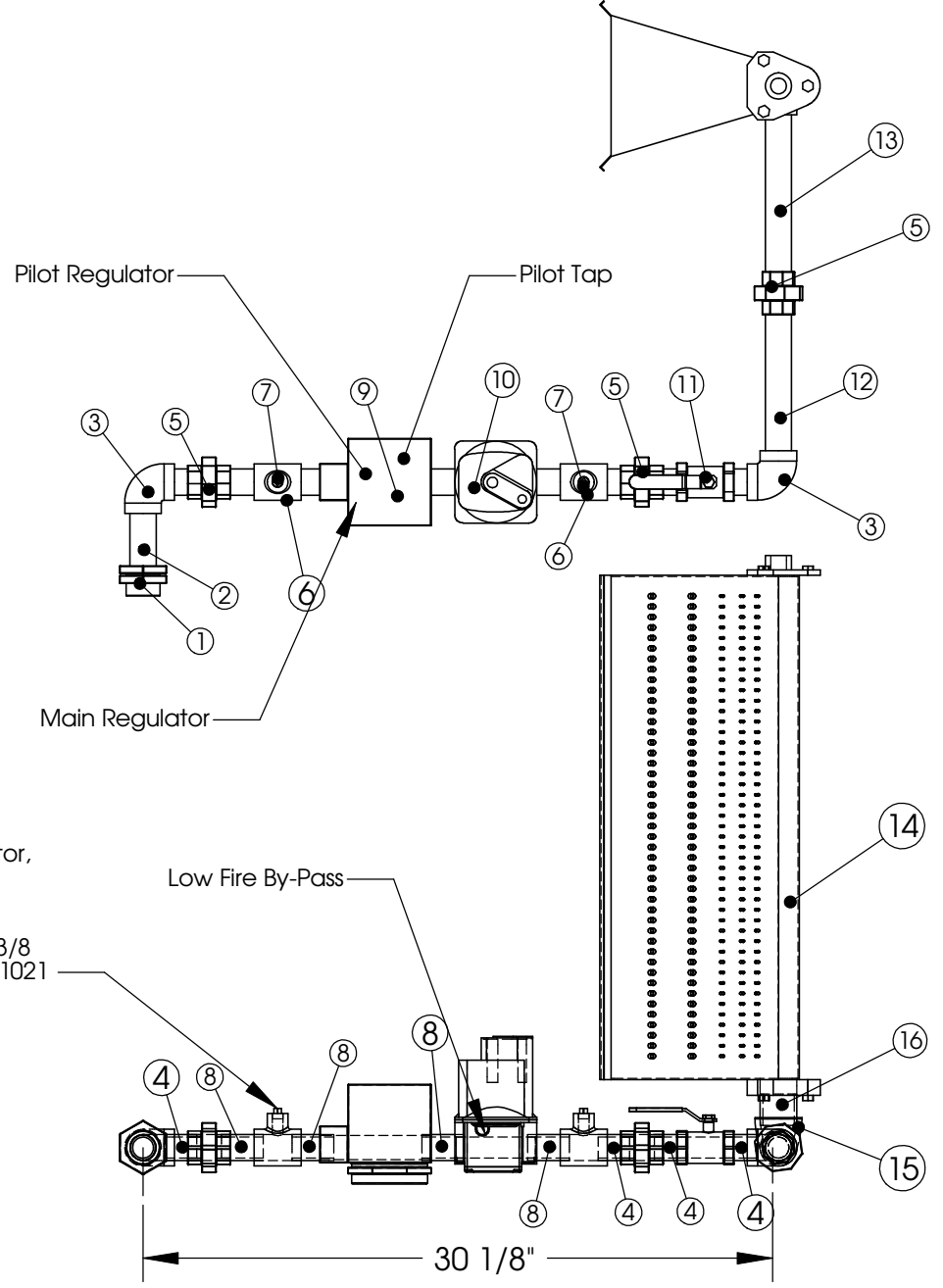


BILL OF MATERIALS

ITEM NUMBER	Description	Quantity
1	1" Quick Seal	1
2	1" x 3-1/2" Nipple	1
3	1" 90° Elbow	2
4	1" x Close Nipple (1-1/2")	4
5	1" Union	3
6	1" x 1" x 1/4" Tee	2
7	1/4" Square Head Pipe Plug	2
8	1" x 2" Nipple	4
9	Robertshaw 7000DERHC 1" Combonation Valve	1
10	Maxitrol M611 1" Modulating Valve	1
11	1" Manual Ball Valve	1
12	1" x 7" Nipple	1
13	1" x 8" Nipple	1
14	12", 18" or 24" Midco Dual Fuel Burner	1
15	1-1/2" to 1" 90° Reducing Elbow	1
16	1-1/2" x Close Nipple (1-3/4")	1

NOTES:  
 Gas Type: Natural or LP  
 Inlet Pressure: 7 in. w.c. - 14 in. w.c.  
 Max. Natural Gas Manifold Pressure: 5 in. w.c.  
 Max. LP Manifold Pressure: 2.5 in. w.c.

External Ball Valve Shipped Loose in Control Cabinet  
 External High Gas Pressure Regulator Required when gas pressure exceeds 14 in. w.c.:  
 P/N = 143-80-2-1-G-5/8 (10 psi. max.)



Pilot Solenoid, Regulator,  
 & Manual Valve  
 Location for MN  
 State Requirements  
 Regulator P/N: 325-3x3/8  
 Solenoid P/N: V4046C1021

Material: N/A  
 Blank Size: N/A x N/A  
 Weight: N/A lbs

Part Number: N/A  
 MACOLA/AX Number:  
 Drawing Name: DF 3 Gas Train  
 Drawn By: BRH  
 Parent Assembly: DF 3  
 Sheet: 1 of 2

Unless Otherwise Specified  
 Dimensions are in Inches.  
 Standard Tolerances are:  
 Fractions: ±1/16  
 Decimal: .XX±.05  
 .XXX±.015  
 Angles: ±1°

**CONFIDENTIAL**

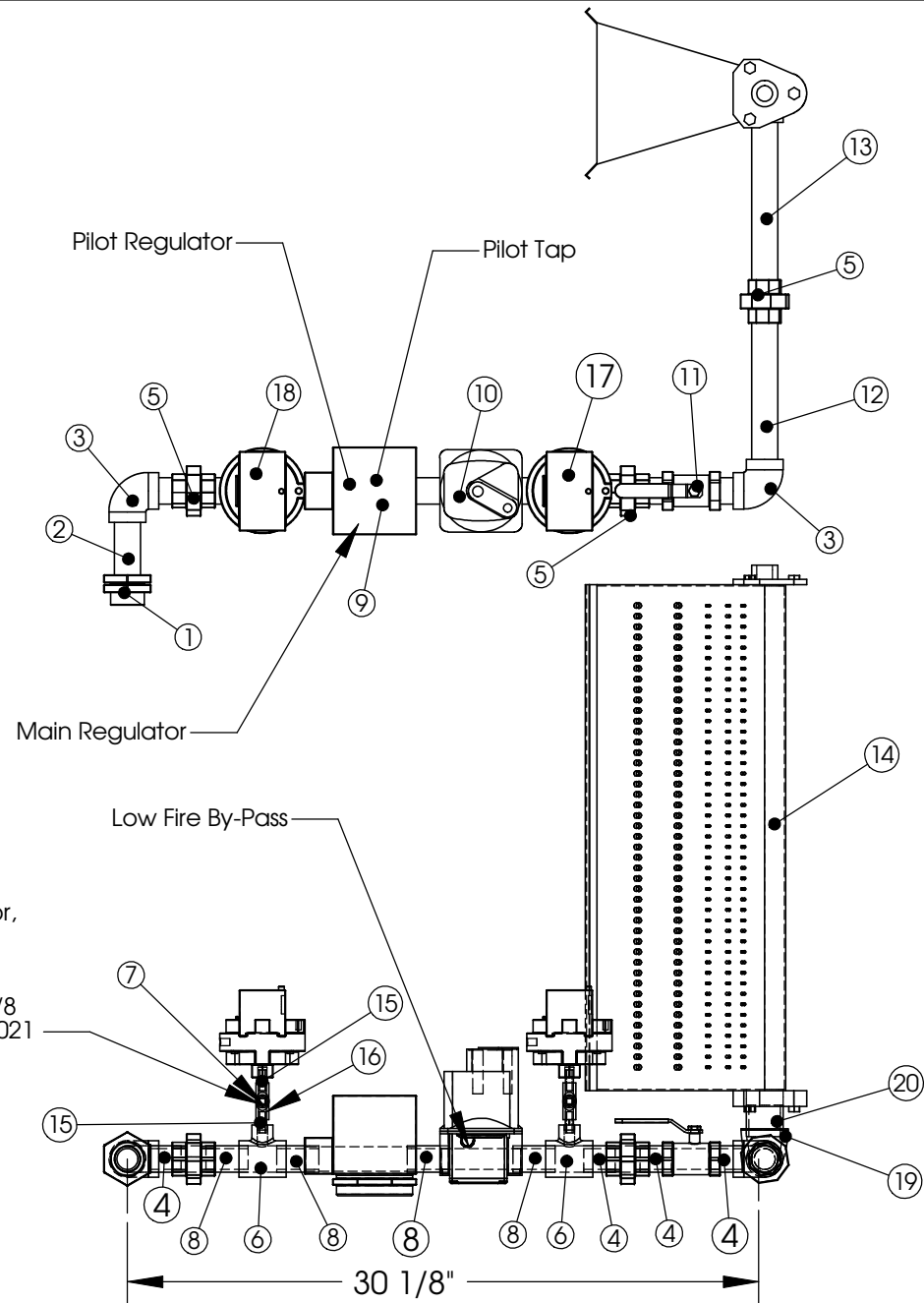
**BILL OF MATERIALS**

ITEM NUMBER	Description	Quantity
1	1" Quick Seal	1
2	1" x 3-1/2" Nipple	1
3	1" 90° Elbow	2
4	1" Close Nipple (1-1/2")	4
5	1" Union	3
6	1" x 1" x 1/4" Tee	2
7	1/4" Square Head Pipe Plug	2
8	1" x 2" Nipple	4
9	Robertshaw 7000DERHC 1" Combination Valve	1
10	Maxitrol M611 1" Modulating Valve	1
11	1" Manual Ball Valve	1
12	1" x 7" Nipple	1
13	1" x 8" Nipple	1
14	12", 18" or 24" Midco Dual Fuel Burner	1
15	1/4" Close Nipple (1")	4
16	1/4" x 1/4" x 1/4" Tee	2
17	Optional Antunes HGP-A M1 Pressure Switch	1
18	Optional Antunes LGP-A M1 Pressure Switch	1
19	1" to 1-1/2" 90° Reducing Elbow	1
20	1-1/2" Close Nipple (1-3/4")	1

NOTES:  
 Gas Type: Natural or LP  
 Inlet Pressure: 7 in. w.c. - 14 in. w.c.  
 Max. Natural Gas Manifold Pressure: 5 in. w.c.  
 Max. LP Manifold Pressure: 2.5 in. w.c.

External Ball Valve Shipped Loose in Control Cabinet

External High Gas Pressure Regulator Required when gas pressure exceeds 14 in. w.c.:  
 P/N = 143-80-2-1-G-5/8 (10 psi. max.)



Pilot Solenoid, Regulator,  
 & Manual Valve  
 Location for MN  
 State Requirements  
 Regulator P/N: 325-3x3/8  
 Solenoid P/N: V4046C1021

Material: N/A  
 Blank Size: N/A x N/A  
 Weight: N/A lbs

Part Number: N/A  
 MACOLA/AX Number:  
 Drawing Name: DF 3 Gas Train  
 Drawn By: BRH  
 Parent Assembly: DF 3  
 Sheet: 2 of 2

Unless Otherwise Specified  
 Dimensions are in Inches.  
 Standard Tolerances are:  
 Fractions: ±1/16  
 Decimal: .XX ±.05  
 .XXX ±.015  
 Angles: ±1°

**CONFIDENTIAL**